



Quatrefoil
HOMES

Almond Way, Hope Village, Flintshire

A HIGH QUALITY DEVELOPMENT OF FOUR & FIVE BEDROOM
DETACHED FAMILY HOMES IN A PRIME SEMI-RURAL LOCATION

IN PARTNERSHIP
WITH


REVELATION
PROPERTIES



The Location: Hope Village

The pretty and tranquil village of Hope is located in Flintshire, North East Wales close to the English border and almost equidistant from Wrexham and Chester. Hope, with its ancient church at one end and the historic castle ruins at the other, sits in the lee of Hope Mountain and the beautiful Alyn River. Hope is home to an excellent primary school and the highly successful English medium co-educational Castell Alun High School which is rated as one of the top schools in Wales. A village pub, a new Co-op convenience store and a state-of-the-art family medical centre are all within walking distance of the Almond Way development.



The Almond Way development combines all the advantages of a stunning countryside location overlooking Hope Mountain with easy commuting into Mold, Chester, Wrexham or even Liverpool or Manchester. Thus, Almond Way delivers the perfect combination of healthy semi-rural living in an accessible location.

Hope Village – one of the Borderlands' most desirable locations



Luxury living in a highly desirable location

Quatrefoil Homes' latest residential development - Almond Way - is nestled in the heart of the most attractive village of Hope and combines luxury living with a tranquil, premium location .

Located on the semi-rural outskirts of the village of Hope, the Almond Way development combines all the advantages of a stunning countryside location overlooking Hope Mountain with easy commuting into Mold, Chester, Wrexham or even Liverpool or Manchester.

Thus, Almond Way delivers the perfect combination of healthy semi-rural living in an accessible location providing Borders living at its best



Set in a stunning semi-rural location within easy walking distance of the town centre

Almond Way,

Hope Village,
Wrexham

This stunning collection of 4 and 5 bedroom properties has been designed with family living in mind. All properties in this collection feature high speed fibre broadband, fully equipped kitchens, French doors opening to ample rear gardens and spacious, open-plan living areas.



The Alpha – plots 1, 2, 3 four bedroom home



The Omega – plots 4, 5, 6 four bedroom home



The Beta – plots 7, 8, 9, 10 four bedroom home



The Beta Plus – plot 13 four bedroom home



The Gamma – plots 11, 12, 14 five bedroom home

Almond Way, – Fourteen x 4 & 5 Bedroom Detached Homes - Site Plan

The Alpha

Our four bedroom family home with en-suite master bedroom & three further doubles.

The ground floor offers a choice of open plan living or a separate lounge & comes with an integral single garage.

The first floor provides an en-suite master bedroom, three further doubles & a family bathroom

Comprising,

Ground Floor:

Kitchen/Dining Area
Lounge Area
Utility, Hall & Cloaks

25'6" x 10'6"
16'5" x 10'5"

Garage:

16'4" x 8'7"

First Floor:

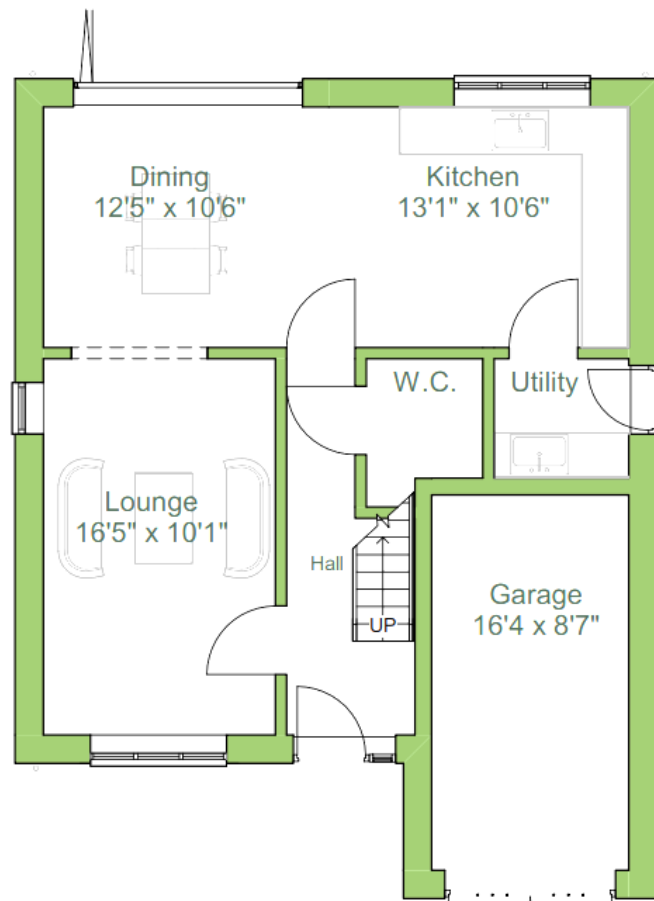
En-suite Master Bedroom	15'5" x 9'10"
Bedroom 2	11'8" x 9'10"
Bedroom 3	16'0" x 8'11"
Bedroom 4	11'1" x 9'2"
Family Bathroom	9'3" x 5'10"



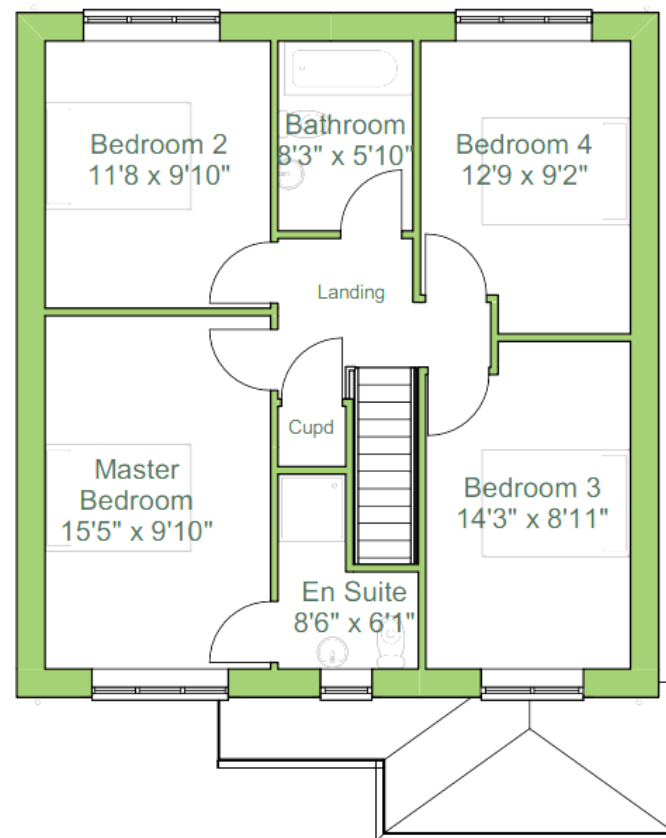
Plots 1 & 3 Almond Way, Hope Village, Flintshire

The Alpha

FLOORPLANS



GROUND FLOOR



FIRST FLOOR



The Alpha

Our four bedroom family home with en-suite master bedroom & three further doubles.

The ground floor offers a choice of open plan living or a separate lounge & comes with an integral single garage.

The first floor provides an en-suite master bedroom, three further doubles & a family bathroom

Comprising,

Ground Floor:

Kitchen/Dining Area
Lounge Area
Utility, Hall & Cloaks

25'6" x 10'6"
16'5" x 10'5"

Garage:

16'4" x 8'7"

First Floor:

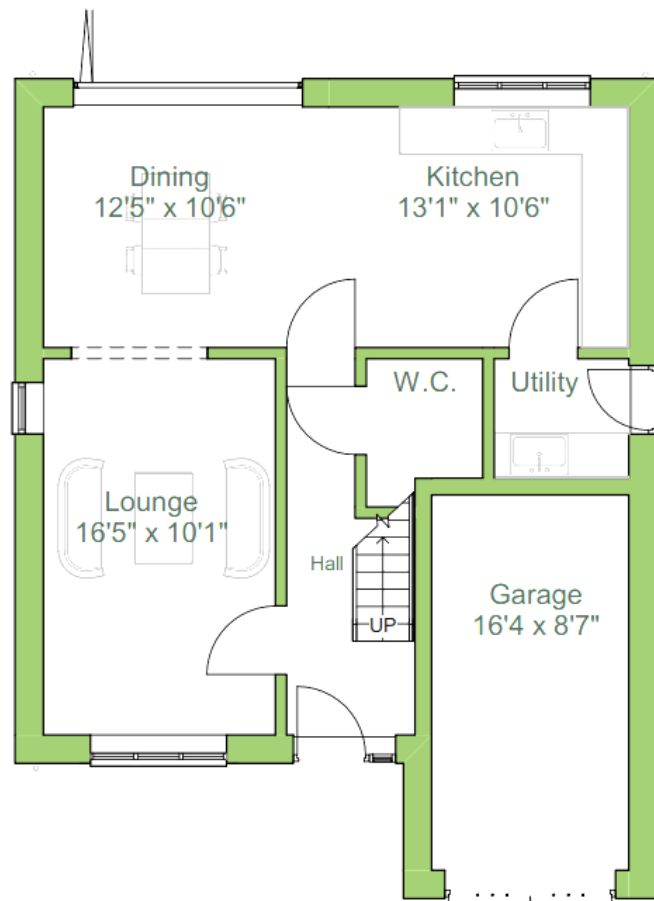
En-suite Master Bedroom	15'5" x 9'10"
Bedroom 2	11'8" x 9'10"
Bedroom 3	16'0" x 8'11"
Bedroom 4	11'1" x 9'2"
Family Bathroom	9'3" x 5'10"



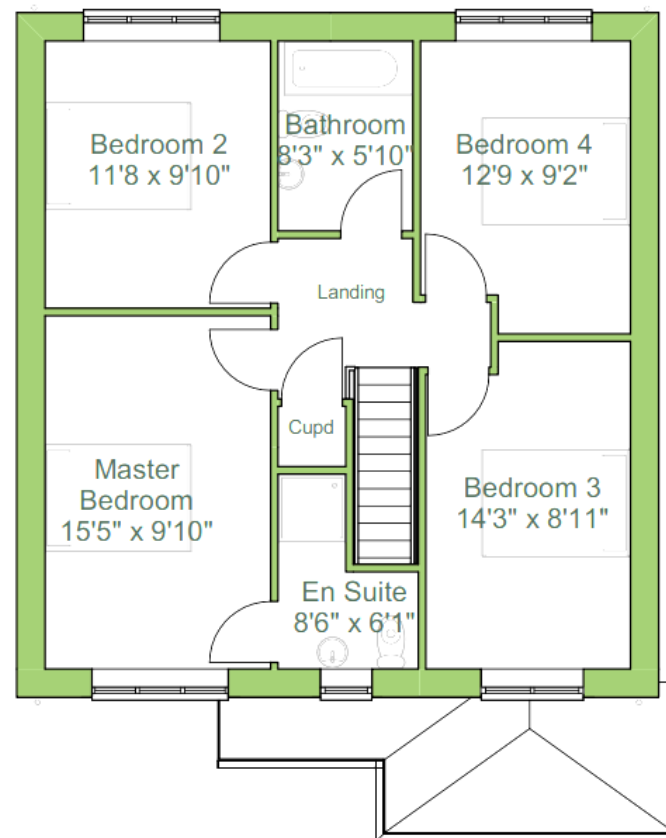
Plot 2 Almond Way, Hope Village, Flintshire

The Alpha

FLOORPLANS



GROUND FLOOR



FIRST FLOOR

The Omega

The Quatrefoil Omega offers a luxurious modern four bedroom home with open plan living, option of a private lounge, utility room & an integral single garage on ground floor

The first floor offers an en-suite master bedroom, a further three double bedrooms & family bathroom.



Plot 4 Almond Way, Hope Village, Flintshire

Comprising,

Ground Floor:

Kitchen/Family Area
Lounge
Utility, Hall & Cloaks

21'9" x 13'4"
16'11" x 14'9"

Garage:

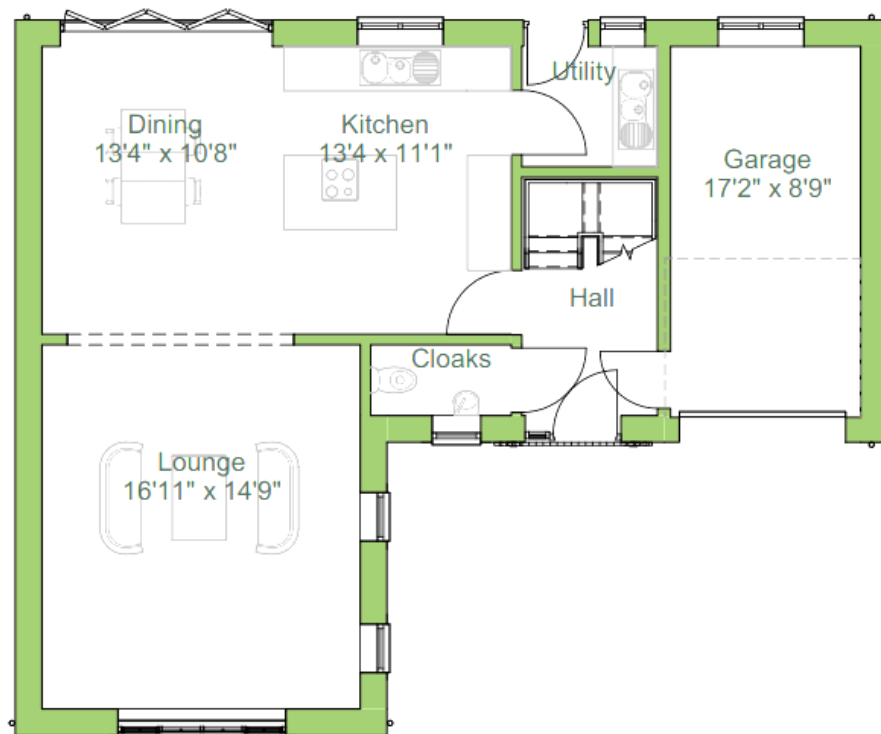
17'2" x 8'9"

First Floor:

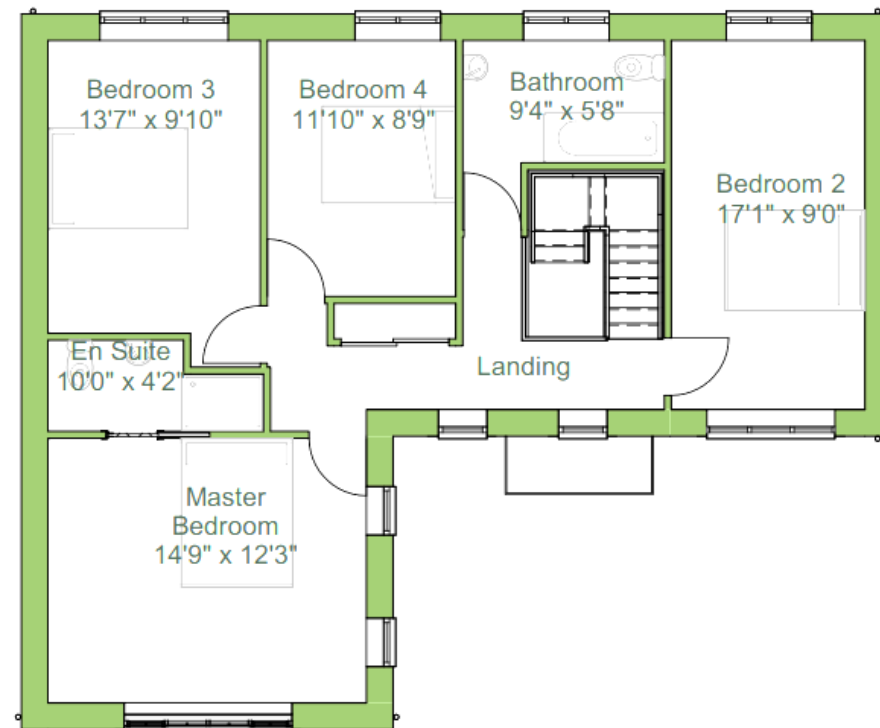
En-suite Master Bedroom	18'11" x 12'3"
Bedroom 2	17'1" x 9'0"
Bedroom 3	13'7" x 9'10"
Bedroom 4	11'10" x 8'9"
Family Bathroom	9'4" x 5'8"

The Omega

FLOORPLANS



GROUND FLOOR



FIRST FLOOR



The Omega

The Quatrefoil Omega offers a luxurious modern four bedroom home with open plan living, option of a private lounge, utility room & an integral single garage on ground floor

The first floor offers an en-suite master bedroom, a further three double bedrooms & family bathroom.



Plot 5 Almond Way, Hope Village, Flintshire

Comprising,

Ground Floor:

Kitchen/Family Area
Lounge
Utility, Hall & Cloaks

Garage:

21'9" x 13'4"
16'11" x 14'9"

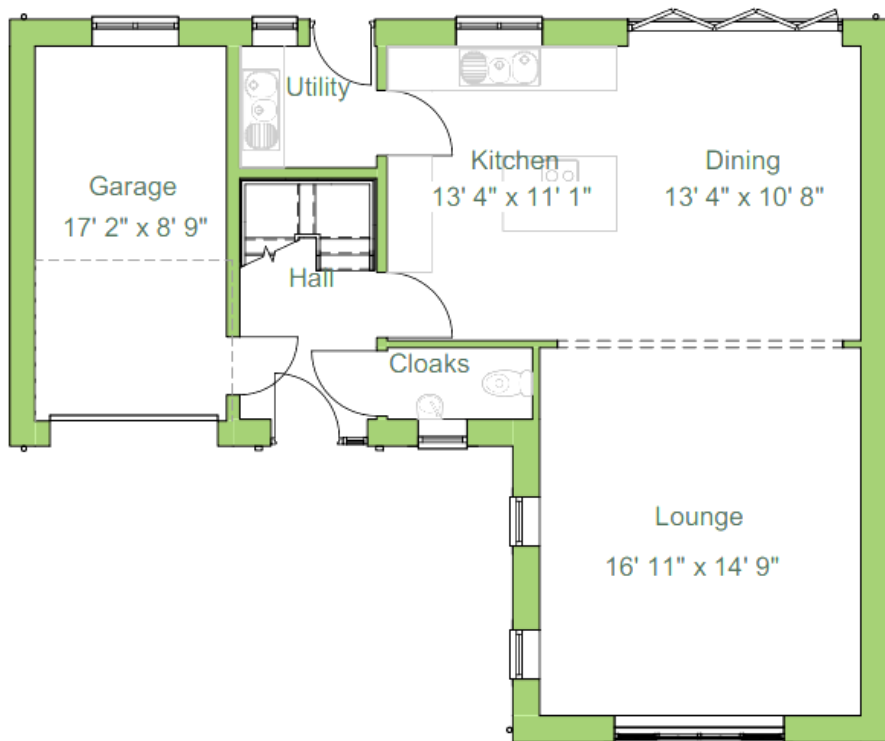
17'2" x 8'9"

First Floor:

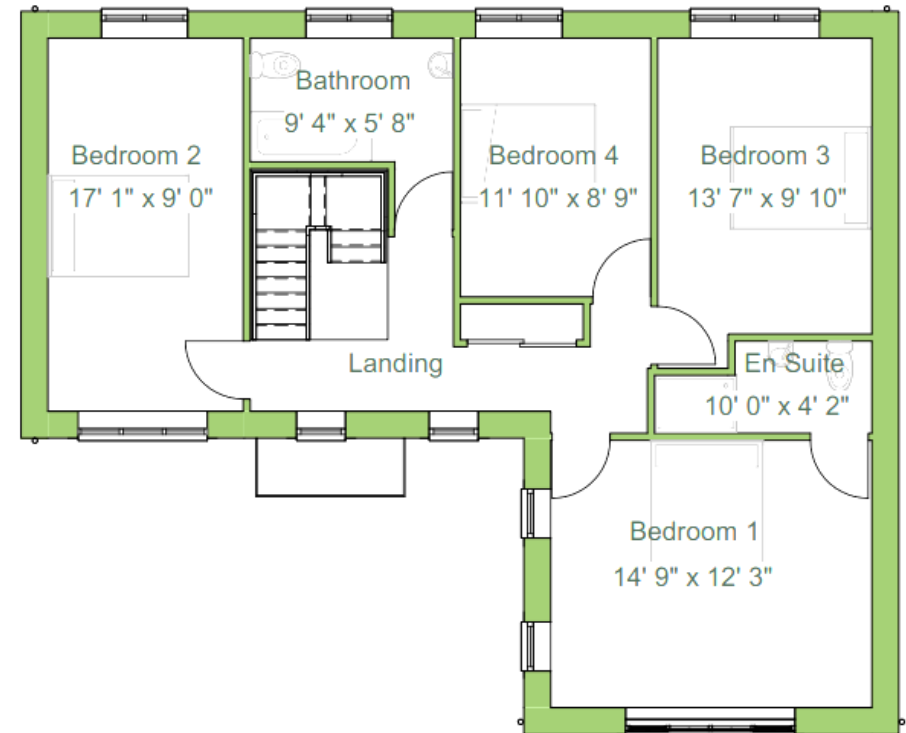
En-suite Master Bedroom	18'11" x 12'3"
Bedroom 2	17'1" x 9'0"
Bedroom 3	13'7" x 9'10"
Bedroom 4	11'10" x 8'9"
Family Bathroom	9'4" x 5'8"

The Omega

FLOORPLANS



GROUND FLOOR



FIRST FLOOR



The Omega

The Quatrefoil Omega offers a luxurious modern four bedroom home with open plan living, option of a private lounge, utility room & an integral single garage on ground floor

The first floor offers an en-suite master bedroom, a further three double bedrooms & family bathroom.



Plot 6 Almond Way, Hope Village, Flintshire

Comprising,

Ground Floor:

Kitchen/Family Area
Lounge
Utility, Hall & Cloaks

Garage:

21'9" x 13'4"
16'11" x 14'9"

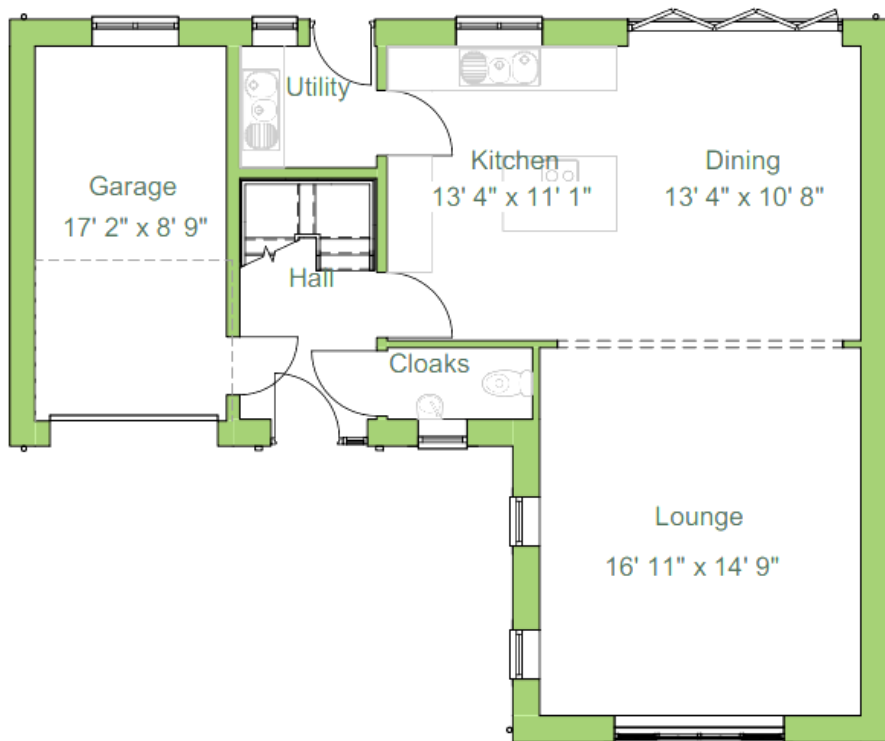
17'2" x 8'9"

First Floor:

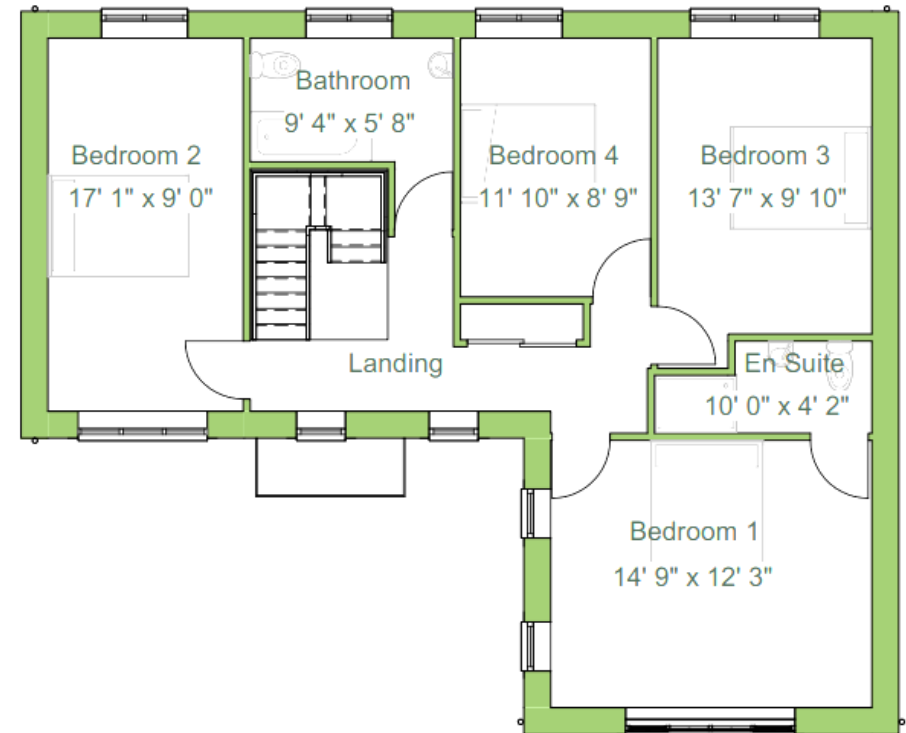
En-suite Master Bedroom	18'11" x 12'3"
Bedroom 2	17'1" x 9'0"
Bedroom 3	13'7" x 9'10"
Bedroom 4	11'10" x 8'9"
Family Bathroom	9'4" x 5'8"

The Omega

FLOORPLANS



GROUND FLOOR



FIRST FLOOR



The Beta

Our four bedroom family home with en-suite master bedroom & three further doubles.

The ground floor offers a choice of open plan living or a separate lounge & comes with an integral single garage.

The first floor provides an en-suite master bedroom, three further doubles & a family bathroom

Comprising,

Ground Floor:

Kitchen Area
Dining Area
Lounge
Utility, Hall & Cloaks

Garage:

15'9" x 10'6"
11'4" x 10'7"
15'9" x 11'1"

17'4" x 8'9"



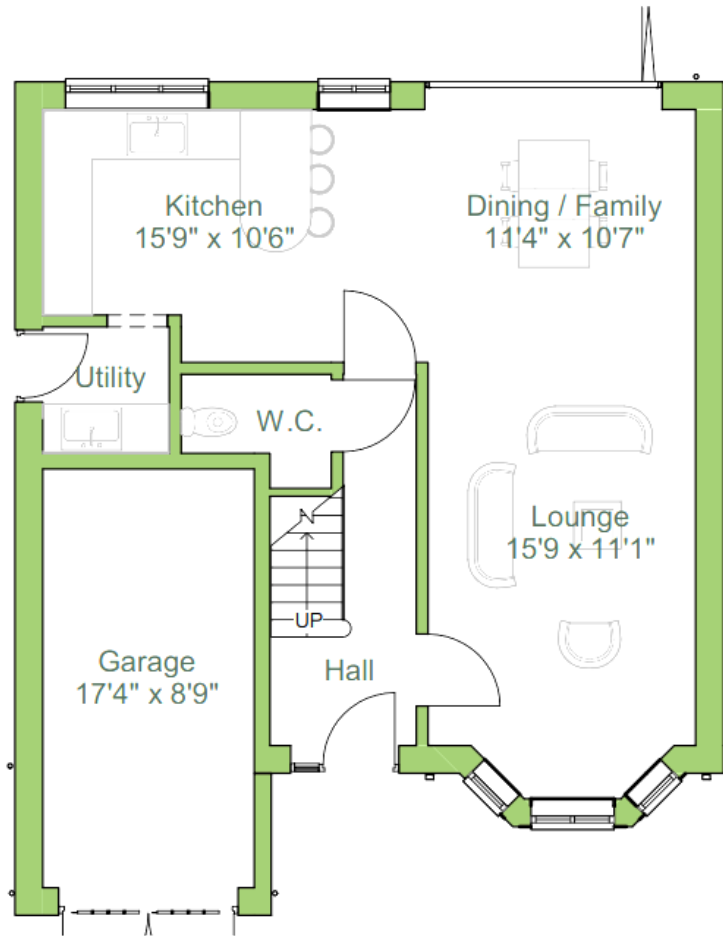
Plots 7 & 9, Almond Way, Hope Village, Flintshire

First Floor:

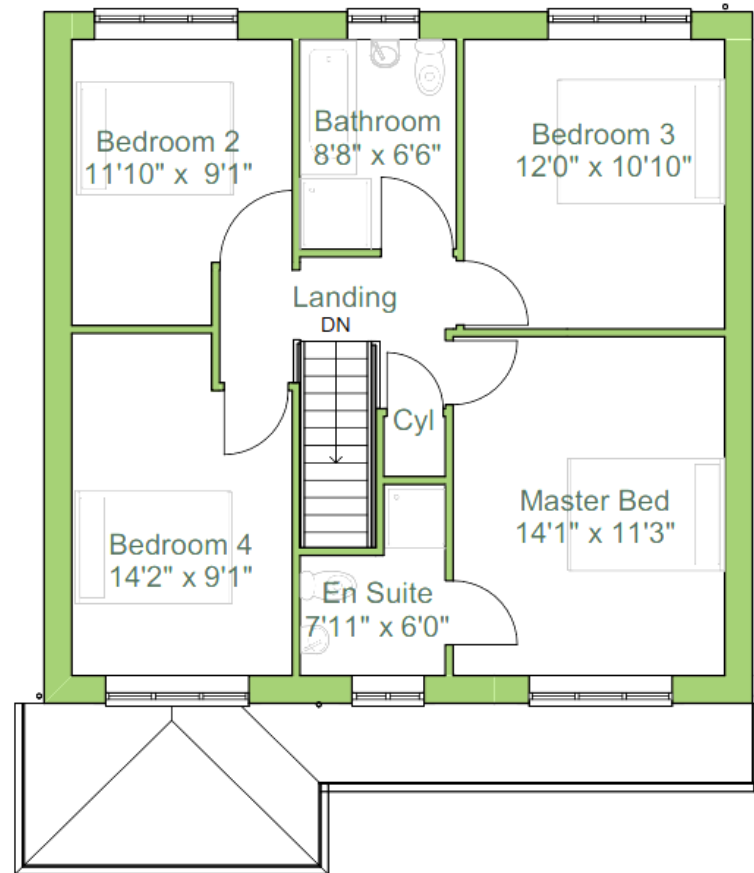
En-suite Master Bedroom 14'1" x 11'3"
En-suite 7'11" x 6'0"
Bedroom 2 11'10" x 9'1"
Bedroom 3 12'0" x 10'10"
Bedroom 4 14'2" x 9'1"
Family Bathroom 8'8" x 6'6"

The Beta

FLOORPLANS



GROUND FLOOR



FIRST FLOOR

The Beta

Our four bedroom family home with en-suite master bedroom & three further doubles.

The ground floor offers a choice of open plan living or a separate lounge & comes with an integral single garage.

The first floor provides an en-suite master bedroom, three further doubles & a family bathroom

Comprising,

Ground Floor:

Kitchen Area
Dining Area
Lounge
Utility, Hall & Cloaks

Garage:

15'9" x 10'6"
11'4" x 10'7"
15'9" x 11'1"

17'4" x 8'9"

First Floor:

En-suite Master Bedroom
En-suite
Bedroom 2
Bedroom 3
Bedroom 4
Family Bathroom

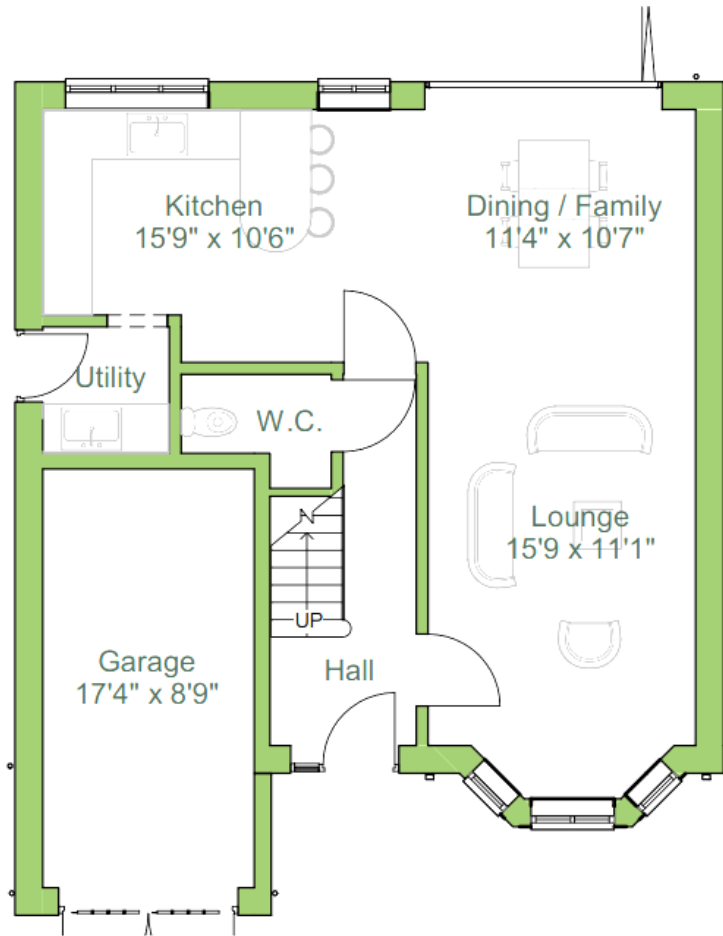
14'1" x 11'3"
7'11" x 6'0"
11'10" x 9'1"
12'0" x 10'10"
14'2" x 9'1"
8'8" x 6'6"



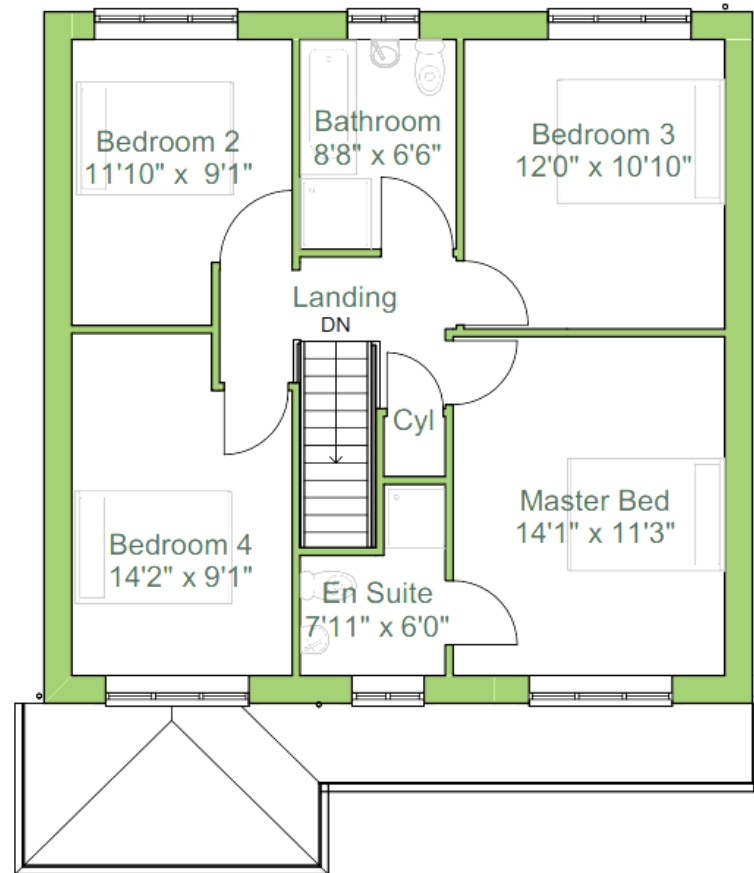
Plots 8 & 10 Almond Way, Hope Village, Flintshire

The Beta

FLOORPLANS



GROUND FLOOR



FIRST FLOOR



The Gamma

The Quatrefoil Gamma provides a substantial five bedroom home with open plan living, utility room & an integral double garage on ground floor

The first floor offers two en-suite double bedrooms, a further two double bedrooms, with a 5th bedroom/study & family bathroom.



Plots 11, 12, 14 Almond Way, Hope Village, Flintshire

Comprising,

Ground Floor:

Kitchen Area
Dining Area
Lounge
Utility, Hall & Cloaks

Garage:

16'2" x 14'9"

16'4" x 9'4"

14'4" x 13'0"

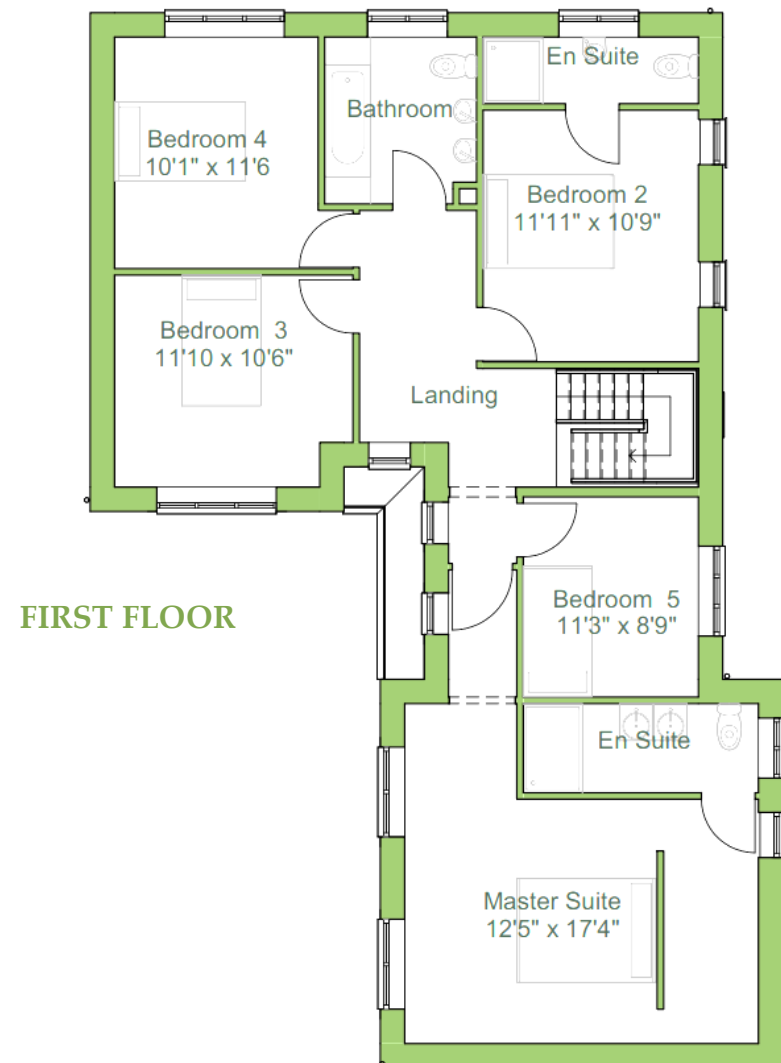
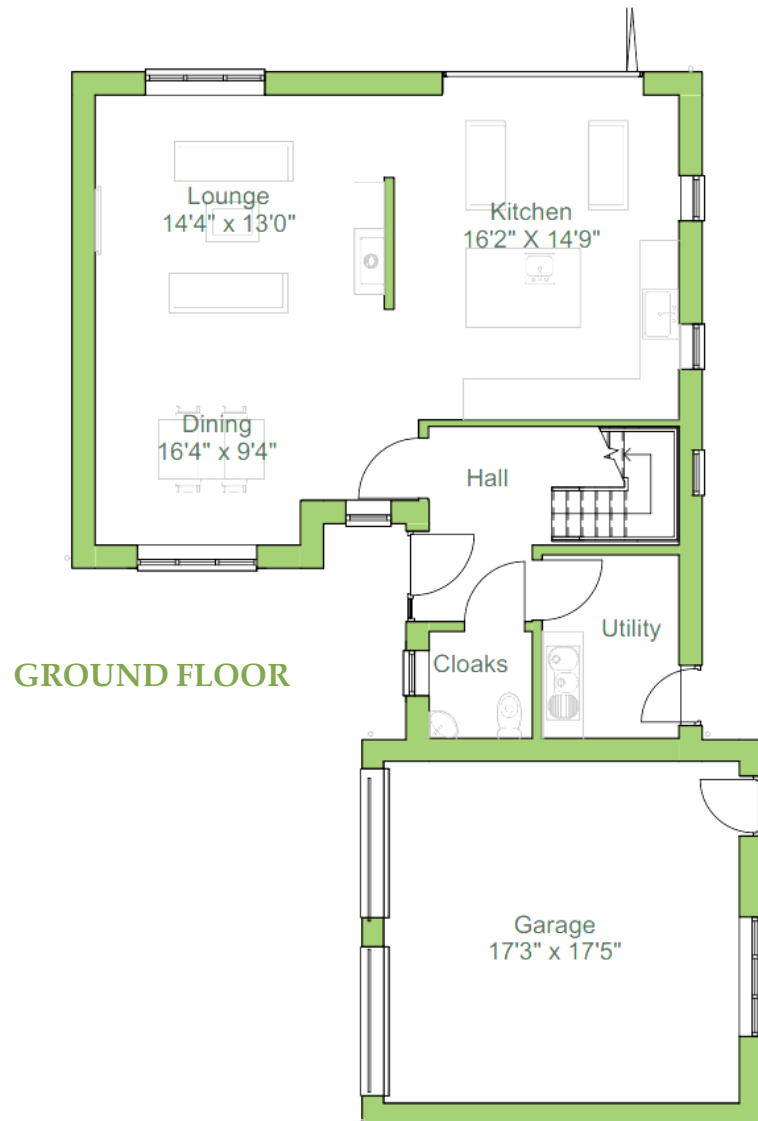
17'5" x 17'3"

First Floor:

En-suite Master Bedroom	17'4" x 12'5"
En-suite Bedroom 2	14'9" x 10'9"
Bedroom 3	11'10" x 10'6"
Bedroom 4	11'6" x 10'1"
Bedroom 5/Study	11'3" x 8'9"
Family Bathroom	8'7" x 6'4"

The Gamma

FLOORPLANS





The Beta Plus

Our four bedroom family home with en-suite master bedroom & three further doubles.

The ground floor offers a choice of open plan living or a separate lounge & comes with an semi integral semi attached double garage.

The first floor provides an en-suite master bedroom, three further doubles & a family bathroom

Comprising,

Ground Floor:

Kitchen Area
Dining Area
Lounge
Utility, Hall & Cloaks

Garage:

15'9" x 10'6"
11'4" x 10'7"
15'9" x 11'1"

17'5" x 17'0"



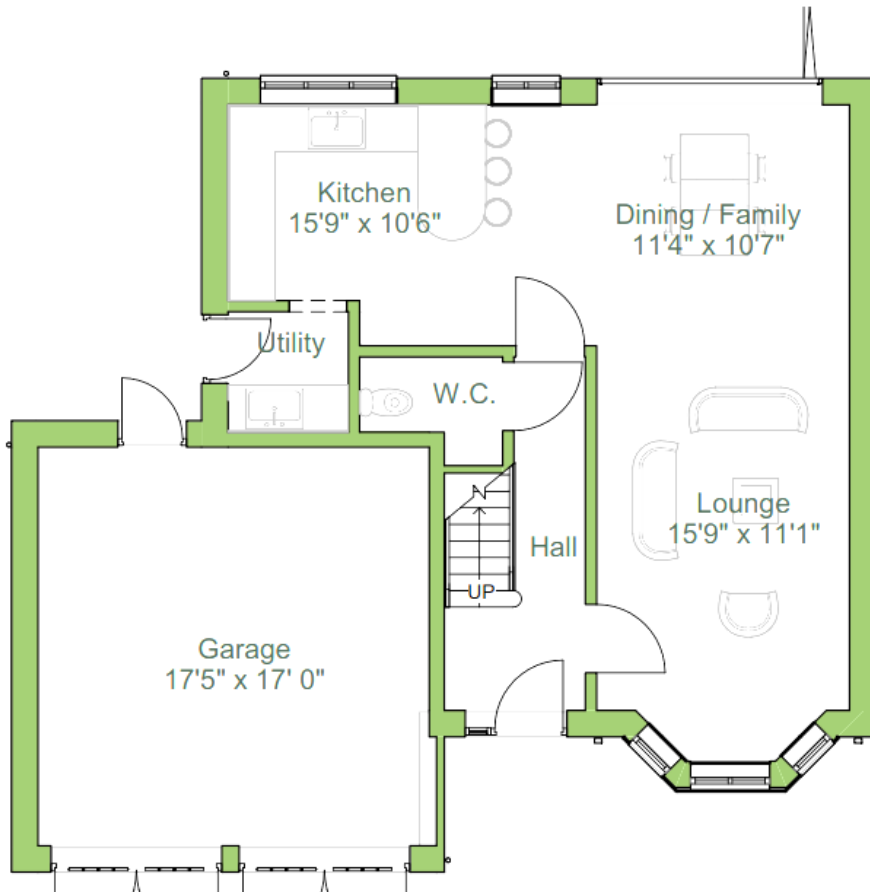
Plot 13 Almond Way, Hope Village, Flintshire

First Floor:

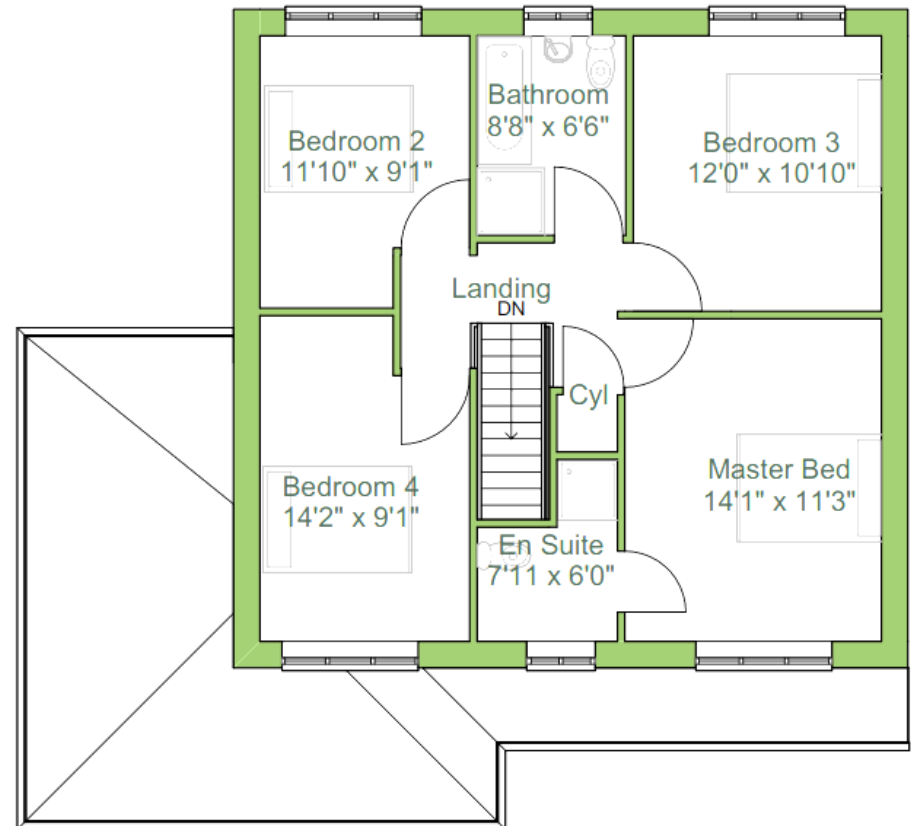
En-suite Master Bedroom 14'1" x 11'3"
En-suite 7'11" x 6'0"
Bedroom 2 11'10" x 9'1"
Bedroom 3 12'0" x 10'10"
Bedroom 4 14'2" x 9'1"
Family Bathroom 8'8" x 6'6"

The Beta Plus

FLOORPLANS



GROUND FLOOR



FIRST FLOOR



Superior Interiors

Quatrefoil Homes are finished to the highest standards with luxurious fixtures & fittings installed throughout our architect designed properties.

We offer a range of choices to allow our buyers to customise their selected new home, inside & out.

Almond Way brings modern & stylish living to this exclusive semi-rural environment



Open the door to stylish living in a new Quatrefoil Home



IN PARTNERSHIP
WITH:



Tenure

Proposed to be sold Freehold.

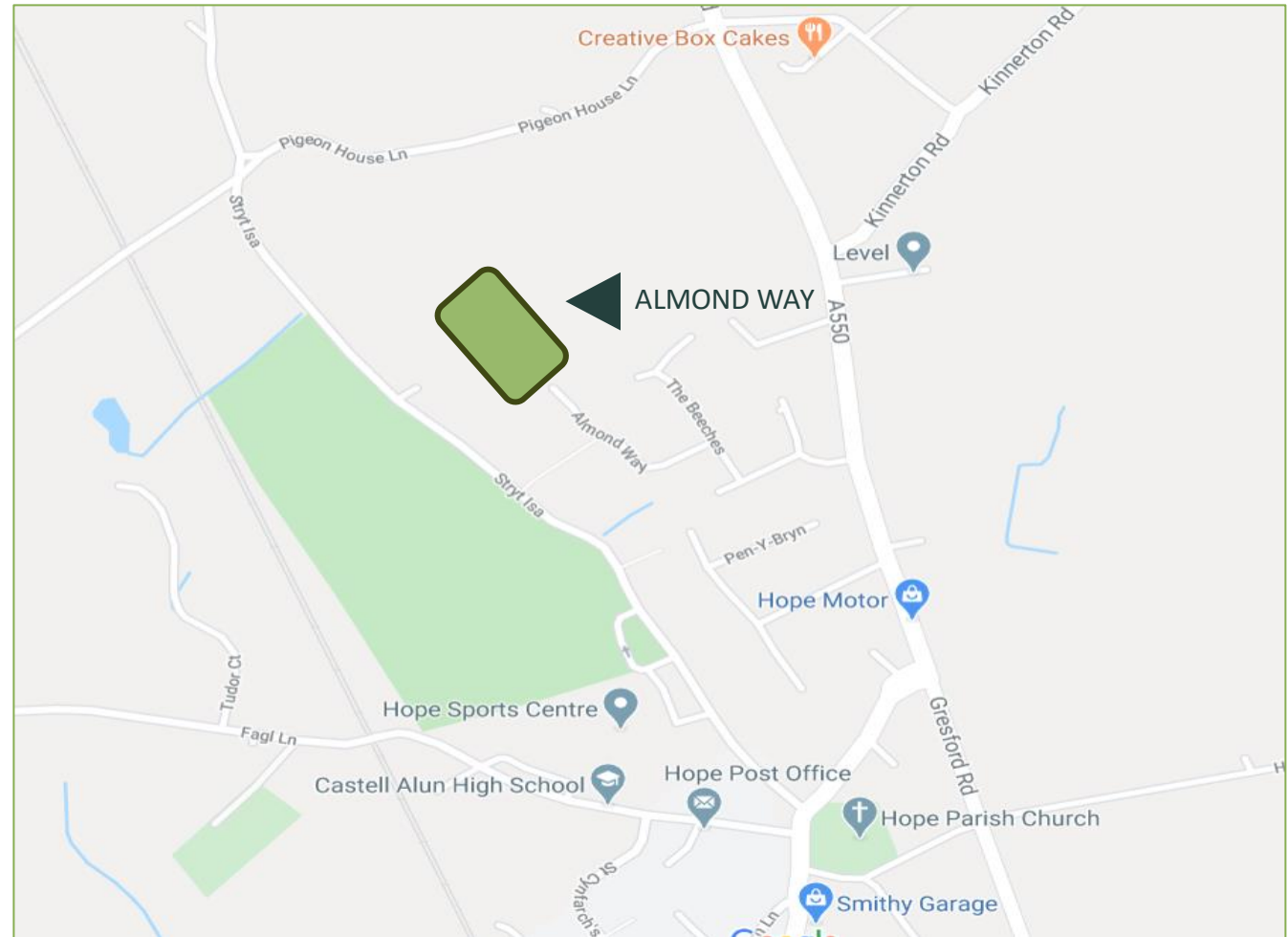
Warranty

The properties benefit from a 10 year warranty guarantee.

Delivered by:
Quatrefoil Builder Partner

FREED HOMES

LISTEN BETTER · PLAN BETTER · BUILD BETTER



This brochure, description and measurements herein, do not form any part of a contract. Whilst every effort has been made to ensure accuracy, this cannot be guaranteed. Site layouts, floor plans and specifications are taken from drawings which were correct at the time of print. All plans contained within this brochure are not to scale and room sizes are approximate and subject to change.

Measurements, information and imagery contained in this brochure is for guidance purposes only and does not constitute a contract, part of contract or warranty. Some images contained in this brochure are computer generated and are for indicative purposes only.

Viewing strictly by appointment
Contact: sales team: 01352 000000

Beresfords Holywell

www.

Email:

**Beresford
Adams**